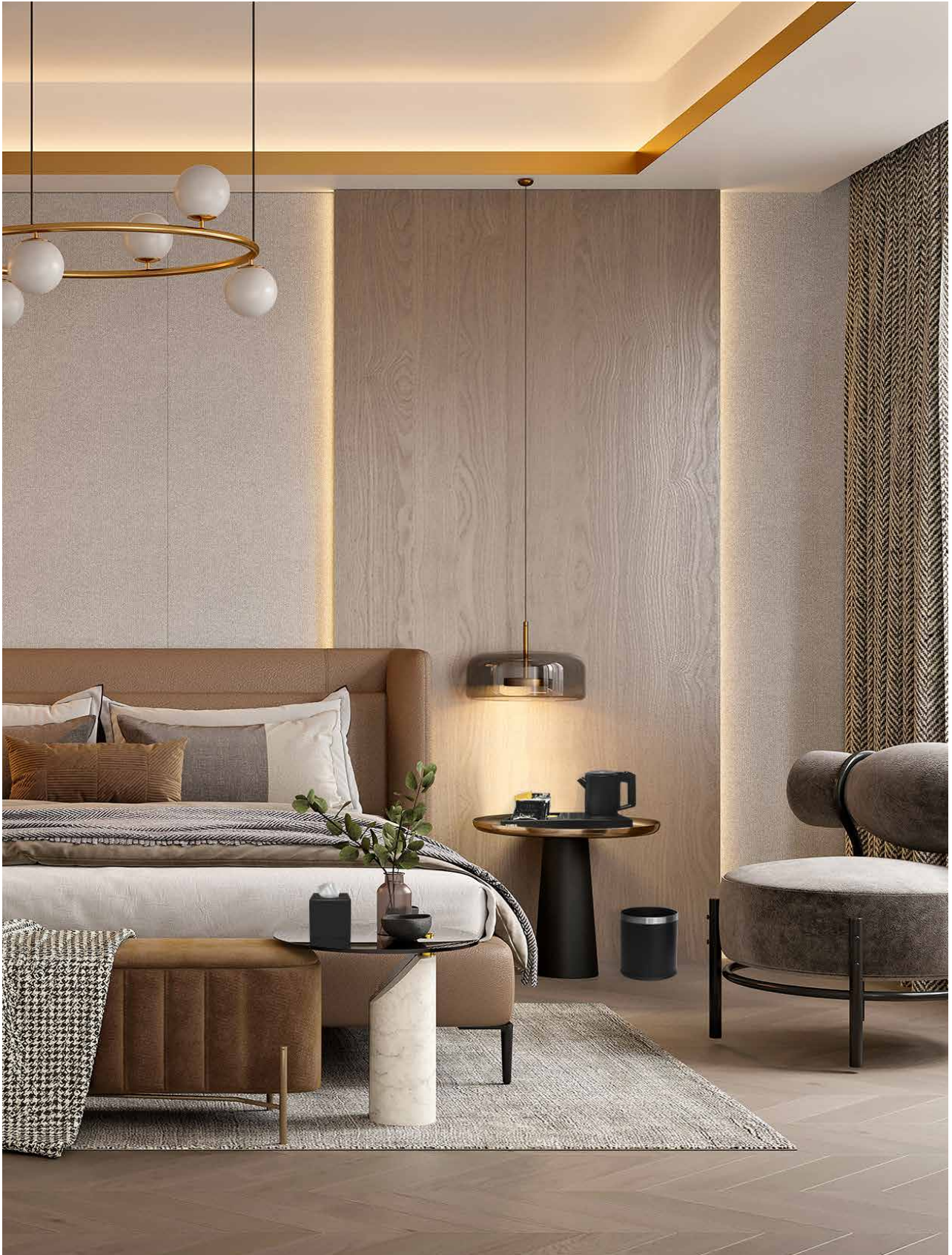


CORBY
OF WINDSOR



ELECTRICALS FOR THE HOTEL GUEST ROOM

RELAX, IT'S COVERED



Terms and Conditions Apply: 3 Year Electrical Guarantee applies to all mains operated electrical items only. This covers failure due to electrical defects and does not cover wear and tear due to excessive use. The 3 Year Electrical Guarantee is applied automatically at purchase, no sign up required. For the full list of Terms and Conditions please visit www.corbyofwindsor.com

CONTENTS

03	INTRODUCTION
05	OUR STORY
07	WHAT WE DO
11	SUSTAINABILITY

PRODUCT COLLECTIONS

13	IRONING
29	KETTLES & TRAYS
43	HAIR DRYERS
51	MINIBARS
61	SAFES
67	GUESTROOM ITEMS

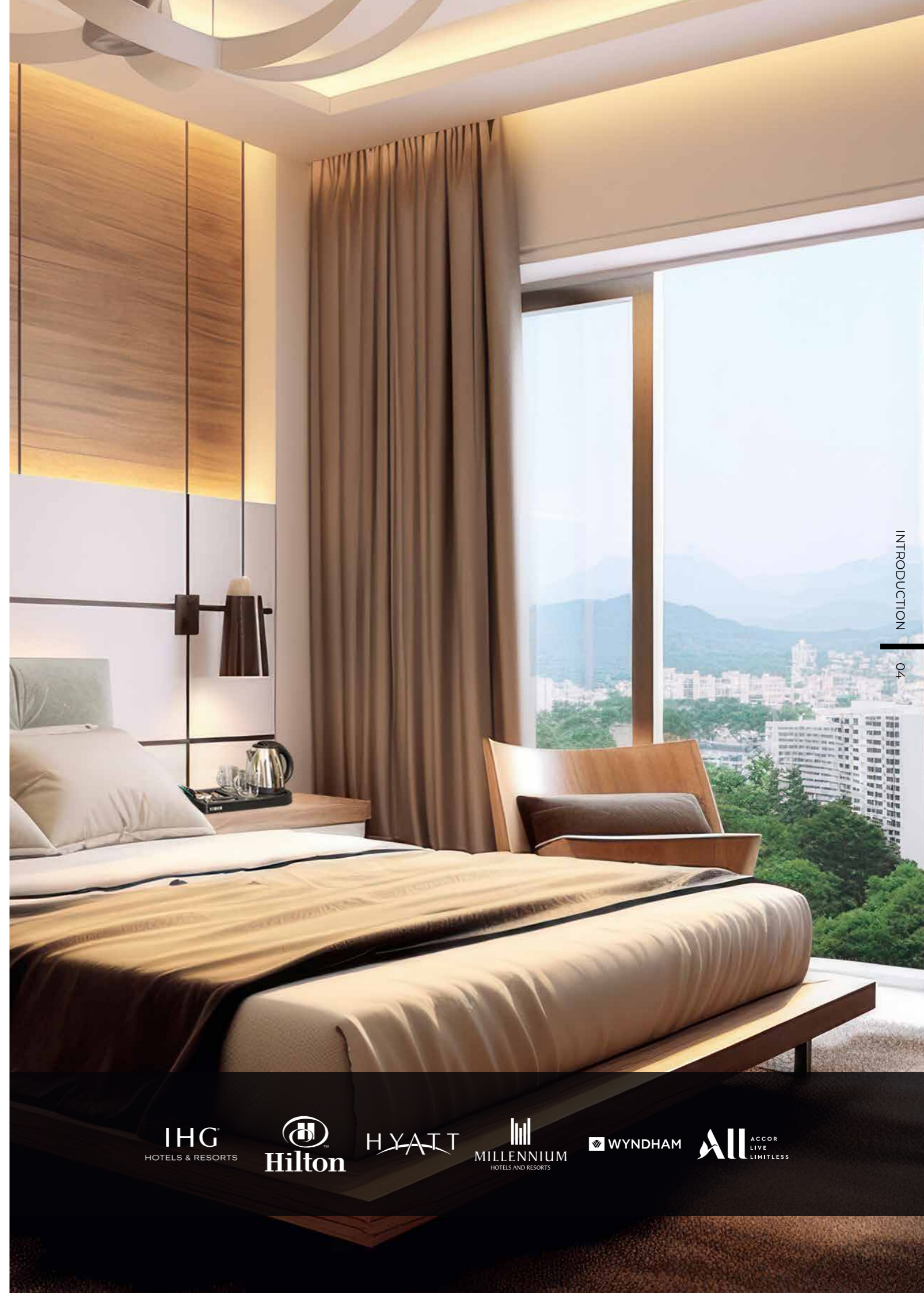
Key of Symbols

New Product Eco Friendly British Design 3 Year Guarantee

CORBY OF WINDSOR

Specialists in electricals for the hotel guest room

Corby of Windsor specialise in the design, manufacture and supply of hotel guest room products. With decades of experience in producing electrical appliances, Corby have the knowledge necessary to ensure our products are not only produced to a consistent standard but they are also appropriately accredited and certified for the markets they serve. We export to over 60 countries worldwide and are specified in many branded hotel chains.



CORBY OF WINDSOR

Established in 1930

Incorporated originally by Mr John Corby in Windsor in 1930, Corby of Windsor was famous for its garment care products, particularly the trouser press. Over the years, Corby moved into the manufacture of electrical products within the garment care category and became a household name in the 1980s as its products began to be procured by hotels around the world.



In 2009

Corby of Windsor was acquired by Fired Up Corporation

Fired Up Corporation Ltd is a global manufacturer and direct sourcing experts, with multiple factories and distribution centres around the world. Its expertise is within electrical appliances, operating under 10 product brands and producing over 500,000 products per year.



OUR STORY

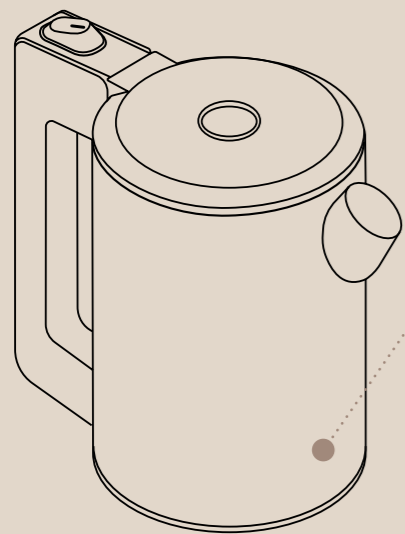
- 1930** Trouser Press manufacturing begins in Windsor, UK.
- 1950** The invention of the worlds first electric trouser press.
- 1980** Over 100,000 electric presses sold in one year
- 2000** Corby of Windsor expand the range of hotel electrical products to include irons and ironing centres, kettles and ancillary products.
- 2009** Fired Up Corporation purchase Corby of Windsor and utilising its extensive design and production facilities expands the range further, to include minibars, hairdryers, safes and scales.
- 2010** A broad range of welcome trays are introduced including the world's first ever drip tray option.
- 2011** Global expansion continues and distributors are appointed in the Middle East and Asia.
- 2012** Another product first, the 180° iron holding brackets are introduced to our ironing centres.
- 2015** Alliances with some of the worlds biggest brands ensure we have a global presence and Corby products are exported to over 60 countries worldwide
- 2018** Collaboration with Nescafé on the Buckingham Compact Welcome Tray.
- 2021** Canterbury collection – Over 96 Welcome tray combinations.
- 2022** Introduced the worlds highest rated glass door minibar with the Eton E
- 2023** New distribution centre opened in Czechia to service customers in Europe
- 2024** Introduced the new recycling range of bins including retro-fit inserts

OUR STORY 06

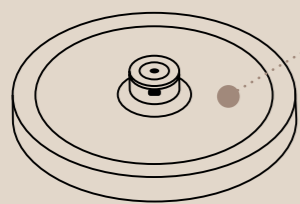
DESIGNED FOR HOTELS

Our UK team of designers have worked with architects, interior designers and furniture manufacturers to create an attractive and versatile range, designed for hotels. We are selective in the materials we use and ensure each product is tested with the hotel and guest in mind.

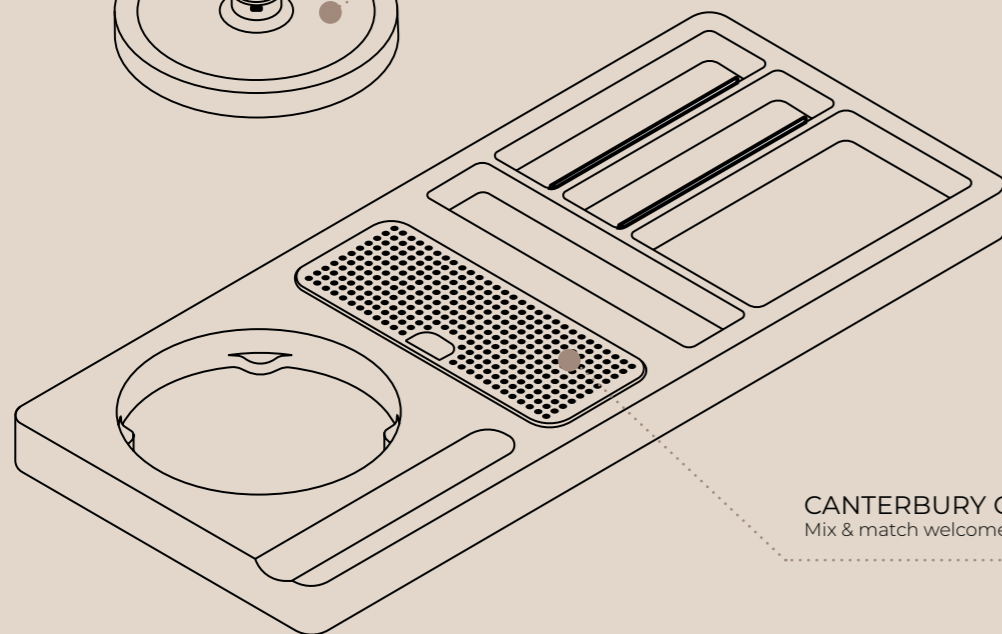
Over the years, we have influenced the industry with our creative thinking and unique safety solutions to set the standard in guest room electricals and work continuously to evolve our range.



CANTERBURY 0.6L KETTLE
Hotel specific 0.6L kettle design



DUAL KETTLE BASE (0.6L & 1L)
Innovative interchangeable kettle base



CANTERBURY CLASSIC WELCOME TRAY
Mix & match welcome tray design for 0.6L & 1L kettles

STAINLESS STEEL DRIP TRAY
Innovative design introduced in 2009



3 ENGINEERED TO LAST

We look at all aspects of construction, materials and 'life testing' to ensure we have the best products for the market. We understand the needs of the customer and have implemented strict measures throughout the manufacturing process in our factories to ensure our products meet the high standards we set ourselves.

Our 3 year guarantee on all electrical products supports this philosophy.



GLOBAL SUPPLY

We have high levels of stockholding and logistics capabilities in UK, EU and China with direct shipping options and stockholding distributors in key growth territories.

We have significant competence in international certification and accreditation with considerable experience in export and distribution of electrical products worldwide.



HOTEL SPECIFIED

Our specialised range of hotel electricals & accessories is ever-evolving alongside styles & trends we see around the world, which is why we are confident we can accommodate any guest room environment.

This is why our products are specified for many of the world's largest hotel chains, making the introduction to our pre-approved product range a simpler and speedier process.





SUSTAINABILITY FOCUSED

Corby of Windsor recognizes the value in identifying and minimizing the environmental impact of our products and operations. We remain committed to the continuous improvement of our sustainability performance to protect the planet for current and future generations.

As a designer and producer, we look at all aspects of the product life cycle, from the materials we use to how our products are manufactured. We continue to challenge conventional production methods to better suit the customer & the environment.

in recent years we have:



Increased the availability of spare parts across the range, meaning customers can repair before recycling or replacing the product.



Within the ironing range, we have eliminated the chroming process that is harmful to people as well as the environment.



Reduced the cubic volume of the ironing centres, without compromising the product, so more items can be shipped.



Improved the assembly process to be more user friendly for local repair.

We have ambitious plans for 2024/25 that will continue to drive change throughout the business and help reduce the impact to the environment within the industry.



SWING INTO ACTION

Originally invented by Corby of Windsor, the 180° iron holder has set the standard in guest room ironing. We have evolved all of our ironing centres to be effortless to use as well as space-saving. We have also revolutionised the manufacturing process for this, reducing the total number of parts required and completely removing the need for chrome plating.



CORBY IRONING COLLECTION

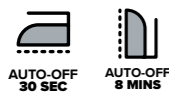
As experts in garment care for over 90 years, our specialised range offers attractive solutions that are engineered to be functional, durable & safe. From All-in-One Ironing Centres to compact ironing boards, we are confident we have the perfect combination to suit your guest room.



SAFE & SECURE

All Corby of Windsor irons are programmed to have a 3-way cut-off feature, so hoteliers have peace of mind if an iron is left unattended. The iron will simply switch off after 30 seconds if left horizontally or 8 minutes if left vertically.

Our all-in-one Ironing centres are a great example of form and function. Everything you need is attached to the centre, making ironing safe and convenient. Each centre is fitted with an anti-theft device to help prevent irons from being stolen.



3 way cut-off

The Sherwood iron collection is programmed with a 3-way cut-off, designed to keep both guests and hoteliers safe if an iron is left unattended.



Anti-theft

All Corby of Windsor Ironing centres are fitted with an anti-theft device to help prevent irons being stolen.



IRONING MADE SIMPLE

We know that space is key to any guest room. With over 200 combinations, Corby of Windsor will have a space saving solution for any setting.



Variety of Ironing Board Sizes

Corby of Windsor have a range of aluminised ironing boards to suit a wide range of hotel spaces.



Cable Tidy

Designed with a handy storage system to keep cables out of view, giving both guests & housekeepers a better product experience.

TAILOR MADE SOLUTIONS

Corby of Windsor has been manufacturing quality garment care products since 1930. Our specialised range of hotel electricals & accessories is ever-evolving alongside styles & trends we see around the world, which is why we are confident we can accommodate any guest room environment.

COVER COLOUR OPTIONS



Light Grey

Dark Grey

IRONING BOARD WITH HANGER AND CADDY



IRONING BOARD WITH HANGER AND IRON HOLDER



IRONING BOARD, IRONING BOARD HOLDER AND CADDY



IRONING BOARD, IRONING BOARD HOLDER AND IRON HOLDER



IRONING BOARD WITH IRONING BOARD AND IRON HOLDER



IRONING CENTRE



CORBY IRONING SOLUTIONS COMBINATIONS

Over 200 combinations to choose from...

KEY	OPTION	SYMBOL
	Stocked	●
	Made to minimum order	○
Not available	x	

		Storage Method	
		Ironing board with caddy	Ironing board with hanger & caddy
1200W Dry Iron	Table Top Ironing Board - Light Grey	x	x
	Classic Ironing Board - Light Grey	●	●
	Classic Ironing Board - Dark Grey	●	●
	Berkshire Compact Ironing Board - Light Grey	●	●
	Berkshire Compact Ironing Board - Dark Grey	●	●
	Oxford - Light Grey	●	●
	Oxford - Dark Grey	●	●
	Cambridge - Light Grey	x	x
1200W Steam Iron	Table Top Ironing Board - Light Grey	x	x
	Classic Ironing Board - Light Grey	●	●
	Classic Ironing Board - Dark Grey	●	●
	Berkshire Compact Ironing Board - Light Grey	●	●
	Berkshire Compact Ironing Board - Dark Grey	●	●
	Oxford - Light Grey	●	●
	Oxford - Dark Grey	●	●
	Cambridge - Light Grey	x	x
1600W Steam Iron	Table Top Ironing Board - Light Grey	x	x
	Classic Ironing Board - Light Grey	●	●
	Classic Ironing Board - Dark Grey	●	●
	Berkshire Compact Ironing Board - Light Grey	●	●
	Berkshire Compact Ironing Board - Dark Grey	●	●
	Oxford - Light Grey	●	●
	Oxford - Dark Grey	●	●
	Cambridge - Light Grey	x	x
2000W Steam Iron	Table Top Ironing Board - Light Grey	x	x
	Classic Ironing Board - Light Grey	●	●
	Classic Ironing Board - Dark Grey	●	●
	Berkshire Compact Ironing Board - Light Grey	●	●
	Berkshire Compact Ironing Board - Dark Grey	●	●
	Oxford Premium- Light Grey	●	●
	Oxford Premium - Dark Grey	●	●
	Cambridge - Light Grey	x	x

Ironing board with board holder & caddy	Ironing board with hanger & separate iron holder	Ironing board with board holder & separate iron holder	Ironing board with iron & board holder	Ironing centre
x	x	x	x	●
●	●	●	●	x
●	●	●	●	x
●	●	●	●	○
●	●	●	●	○
●	●	●	●	○
●	●	●	●	○
x	x	x	x	●
x	x	x	x	○
●	●	●	●	x
●	●	●	●	x
●	●	●	●	●
●	●	●	●	○
●	●	●	●	●
●	●	●	●	●
x	x	x	x	○
x	x	x	x	x
●	●	●	●	x
●	●	●	●	x
●	●	●	●	x
●	●	●	●	x
●	●	●	●	x
●	●	●	●	●
●	●	●	●	○
x	x	x	x	x

CORBY IRONING CENTRES

For effective and safe ironing, our ironing centres are engineered with steam flow mesh boards with burn proof aluminised covers. Our range of ironing centres also feature anti-theft security alongside the original 180° iron holder that has been designed for left and right handed users.

OXFORD PREMIUM IRONING CENTRE



Features:

- Supplied with 2000W iron
- Integrated hanger & cable tidy
- Easy opening mechanism
- Anti-theft security box
- 3 way auto cut off system

Specification:

Light Grey / Dark Grey
2000W
5.9kg
330ml tank
3m cable length

Dimensions:

(Board Open)	(Board Closed)
Height - 590 - 840mm	Height - 1270mm
Width - 1015mm	Width - 360mm
Depth - 340mm	Depth - 265mm

TABLE TOP IRONING CENTRE



Features:

- Supplied with 1200W dry iron
- Integrated hanger & cable tidy
- Compact board size
- Anti-theft security box
- Fixed ABS legs

Specification:

Light Grey
1200W dry iron
3.4kg
2.5m cable length

Dimensions:

Height - 250mm
Width - 345mm
Depth - 910mm

CAMBRIDGE COMPACT IRONING CENTRE



Features:

- Supplied with 1200W iron
- Wall mounted iron rest
- Dual LED indicators
- Wall mounted iron rest
- 3 way auto cut off system

Specification:

Light Grey
1200W dry iron
7kg
1.9m cable length

Dimensions:

Height - 800mm
Width - 350mm
Depth - 60mm

OXFORD IRONING CENTRE



Features:

- Supplied with 1200W iron
- Integrated hanger & cable tidy
- Easy opening mechanism
- Anti-theft security box
- 3 way auto cut off system

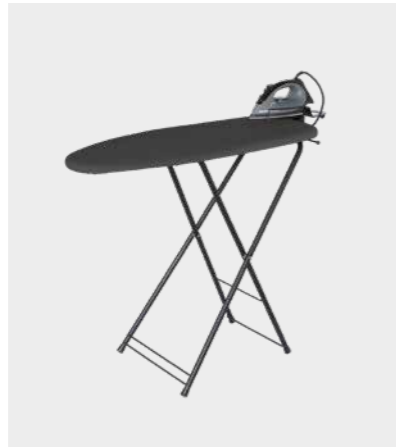
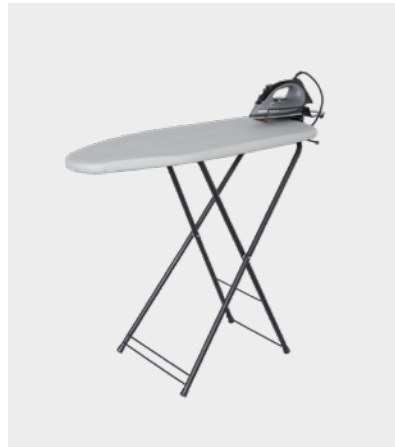
Specification:

Light Grey / Dark Grey
1200W
5.3kg
145ml tank
2.5m cable length

Dimensions:

(Board Open)	(Board Closed)
Height - 590 - 840mm	Height - 1270mm
Width - 1025mm	Width - 360mm
Depth - 340mm	Depth - 230mm

BERKSHIRE IRONING CENTRE



Features:

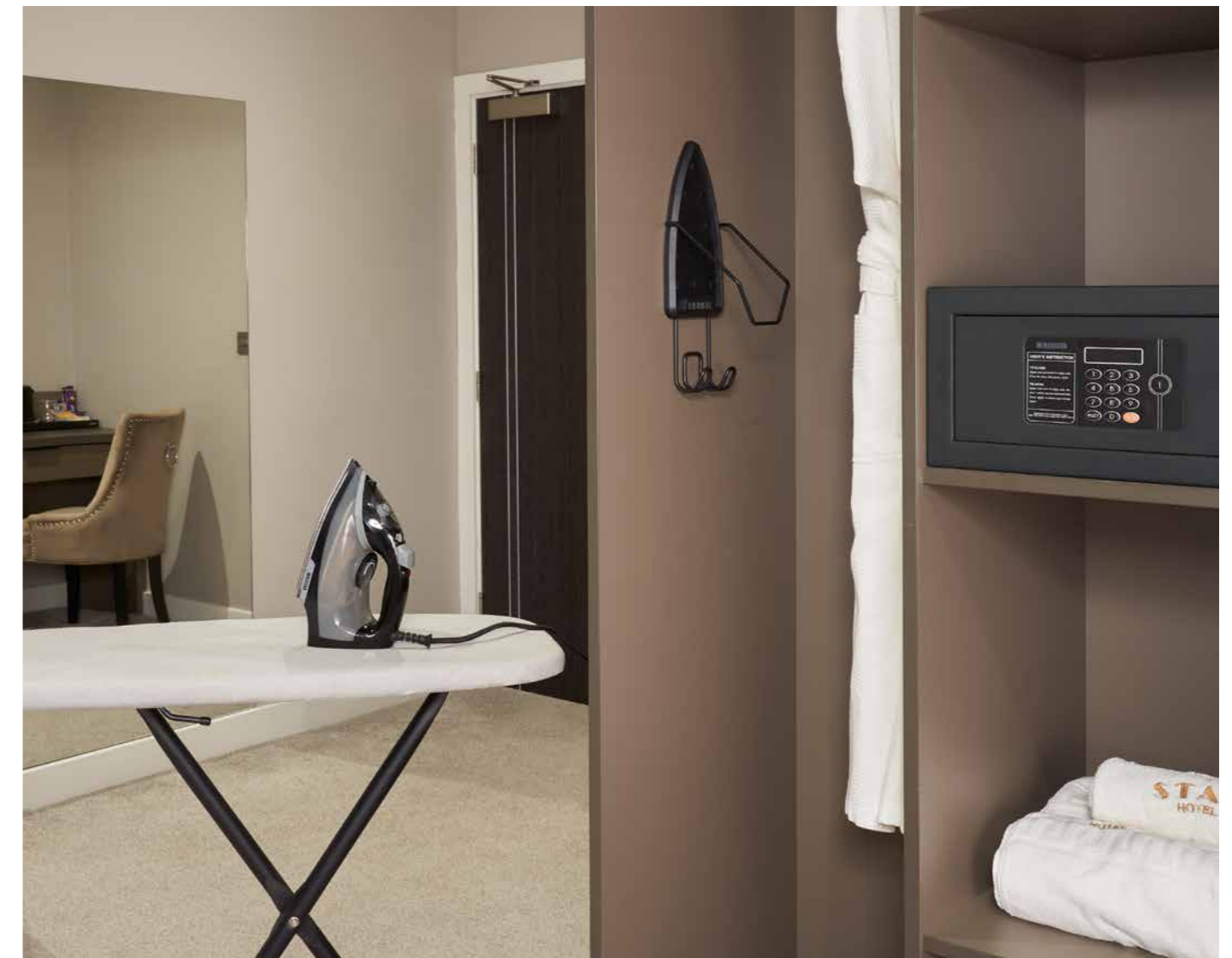
- Supplied with 1200W iron
- Integrated hanger & cable tidy
- Deck chair opening mechanism
- Anti-theft security box
- 3 way auto cut off system

Specification:

Light Grey / Dark Grey
1200W
4.8kg
145ml tank
2.5m cable length

Dimensions:

(Board Open)	(Board Closed)
Height - 755mm	Height - 1135mm
Width - 895mm	Width - 400mm
Depth - 340mm	Depth - 210mm



CORBY IRONING BOARDS

Our range of ironing boards are available in a range of sizes and colours. Their steam flow mesh boards and burn proof aluminised covers are some of the features that ensure guests have a pleasant experience.

OXFORD IRONING BOARD



Features:

- Durable powder coated legs and frame
- Easy open mechanism
- Lightweight design
- 7 height positions
- Burn proof aluminised cover

Specification:

Light Grey / Dark Grey
3.5kg

Dimensions:

(Board Open)	(Board Closed)	(Board Closed / Hanger)
Height - 590 - 840mm	Height - 1125mm	Height - 1220mm
Width - 1100mm	Width - 360mm	Width - 360mm
Depth - 340mm	Depth - 70mm	Depth - 70mm



Compatible with the Ironing Board Hanger.

BERKSHIRE IRONING BOARD



Features:

- Durable powder coated legs and frame
- Deck chair mechanism
- Lightweight design
- Burn proof aluminised cover

Specification:

Light Grey / Dark Grey
3.0kg

Dimensions:

(Board Open)	(Board Closed)	(Board Closed / Hanger)
Height - 755mm	Height - 1000mm	Height - 1115mm
Width - 895mm	Width - 400mm	Width - 400mm
Depth - 340mm	Depth - 50mm	Depth - 50mm



Compatible with the Ironing Board Hanger.

CLASSIC IRONING BOARD



Features:

- Durable powder coated legs and frame
- 7 height positions
- Easy opening mechanism
- Lightweight design
- Burn proof aluminised cover

Specification:

Light Grey / Dark Grey
3.6kg

Dimensions:

(Board Open)	(Board Closed)
Height - 995-835mm	Height - 1240mm
Width - 940mm	Width - 360mm
	Depth - 65mm

CORBY GARMENT STEAMER & MAT

The garment steamer range offers an effective way to remove creases whilst refreshing items of clothing. The Stockton garment steamer is compatible with our Sherwood caddy so it can be easily stored away when not in use. To compliment the range and help protect furniture, the Darlington garment mat provides a solution that can be used almost anywhere within the guest room.

STOCKTON GARMENT STEAMER



Features:

- Non stick stainless steel plate
- Continuous steam rate 20-25G
- Trigger activated - 2x steam settings
- 270ml detachable water tank
- Compact design

Specification:

Black
1.1kg
1500W
3m cable length

Dimensions:

Height - 295mm
Width - 115mm
Depth - 145mm

DARLINGTON GARMENT MAT



Features:

- Integrated hook & hanger
- Double sided garment mat
- Suitable for ironing & steaming
- Burn proof aluminised cover
- Lightweight & slim line design

Specification:

Dark Grey
1.5kg

Dimensions:

Height - 995mm
Width - 420mm
Depth - 60mm



CORBY IRONS

Corby of Windsor offer a range of irons from 1200-2000W. Our irons have been engineered with an auto cut off system (8 mins vertical / 30 seconds horizontal).

SHERWOOD 2000W STEAM IRON



Features:

- Stainless steel soleplate
- Self cleaning function
- Adjustable temperature dial
- Hotel safety iron
- 3 way auto cut-off

Specification:

Black & grey
1.2kg
2000W
330ml water tank
3m cable length

Dimensions:

Height - 160mm
Width - 290mm
Depth - 117mm

SHERWOOD 1600W STEAM IRON



Features:

- Stainless steel soleplate
- Steam & spray function
- Adjustable temperature dial
- Hotel safety iron
- 3 way auto cut-off

Specification:

Black & grey
1.1kg
1600W
250ml water tank
2.5m cable length

Dimensions:

Height - 150mm
Width - 287mm
Depth - 118mm

SHERWOOD 1200W STEAM IRON



Features:

- Stainless steel soleplate
- Compact & lightweight
- Adjustable temperature dial
- Hotel safety iron
- 3 way auto cut-off

Specification:

Black & Grey / White & Grey
0.75kg
1200W
145ml water tank
2.5m cable length

Dimensions:

Height - 120mm
Width - 250mm
Depth - 105mm

SHERWOOD 1200W DRY IRON



Features:

- Non-stick soleplate
- Compact & lightweight
- Adjustable temperature dial
- Hotel safety iron
- 3 way auto cut-off

Specification:

Black / White
0.6kg
1200W
2.5m cable length

Dimensions:

Height - 120mm
Width - 250mm
Depth - 105mm

CORBY IRONING ACCESSORIES

Corby of Windsor offers a variety of space-saving accessories to keep hotel garment care simple. This range of accessories is specifically designed with the hotel experience in mind by offering both quality and style to any guest room.

SHERWOOD IRON & IRONING BOARD HOLDER



Features:

- Wall mounted holder
- Concealed fixings
- Rigid & durable construction
- Heat resistant resting plate
- Full sole plate protection
- Accommodates all Corby irons

Specification:

Black
0.3kg - 0.4kg
1200/1600W & 2000W Models

Dimensions:

(1200W / 1600W)	(2000W)
Height - 335mm	380mm
Width - 130mm	140mm
Depth - 110mm	125mm

IRONING BOARD HANGER



Features:

- Easy to fit
- Suitable for Oxford & Berkshire ironing boards

Specification:

Black
0.2kg

Dimensions:

Height - 185mm
Width - 75mm
Depth - 25mm

SHERWOOD IRONING CADDY



Features:

- Heat resistant reinforced base
- Cord tidy storage
- Carry handle
- Accommodates all Corby irons & the Stockton garment steamer

Specification:

Grey & Black
0.2kg

Dimensions:

Height - 190mm
Width - 160mm
Depth - 300mm

SHERWOOD IRONING BOARD HOLDER



Features:

- Wall mounted holder
- Concealed fixings
- Rigid & durable construction
- Accommodates all Corby ironing boards

Specification:

Black
0.1kg

Dimensions:

Height - 90mm
Width - 100mm
Depth - 45mm

IRONING BOARD COVERS



Features:

- Burn proof aluminised cover

Specification:

Light Grey / Dark Grey
0.25kg

Available for:

Oxford
Berkshire
Classic
Table Top (Light Grey ONLY)
Cambridge (Light Grey ONLY)



CORBY KETTLES & TRAYS

Designed for hotels, our eco friendly kettles & trays are available in a wide range of sizes, finishes and styles. Our welcome trays with their innovative drip tray feature has shaped the industry, providing guests with everything they need to make a relaxing hot drink.

A WARM WELCOME

A warm drink is a great way to start the day. Feel relaxed and assured that Corby of Windsor will not let you down. With decades of experience in designing and manufacturing electrical products for the hotel industry, we understand what our customers require of us; that's why we offer a 3 year guarantee on all electrical products.



British Designed

Our products are designed by our UK based team of product developers in collaboration with international engineering teams. The team examines all aspects of construction, materials and 'life testing' to ensure we have the best possible offering in terms of value & serviceability for hoteliers.

RELAX & SWITCH OFF

Corby kettles have been engineered with World leading Strix technology. Strix thermal controllers are manufactured to exceed 12,000 cycles of normal operation, so hoteliers & guests will have peace of mind that their kettles will perform.



Strix Technology

Corby kettles are engineered with World leading thermal control technology.



Lift Off Reset

Corby Kettles are fitted with an additional safety system that only allows the kettle to dry boil once. This feature is designed to keep both guests and hoteliers safe if a kettle is left to dry boil unattended.

DESIGNED FOR HOTELS

We understand how a kettle should perform for guests and house keepers, which is why Corby kettles are manufactured with integrated concealed heating elements that are easy to clean and maintain. The Canterbury kettle range has been uniquely designed with an extra wide opening that is easy to fill for guests, but more importantly easy to clean.



Wide Opening

The Canterbury kettle range features with an extra wide opening, offering benefits to guests and house keeping.



Anti-Theft



All corby welcome trays come with an anti-theft security clip so kettles can fit securely to the tray.



Natural Wood Welcome Trays

These are constructed from 25mm hardwood and are available in 3 colours: light wood, dark wood & black.

CORBY KETTLE & TRAY COMBINATIONS

Over 100 combinations to choose from...

KEY	OPTION	SYMBOL
	Stocked	●
Not available	x	

COMBINATIONS

	Canterbury 0.6L Double Walled - Brushed Steel	Canterbury 0.6L Double Walled - Black	Canterbury 0.6L - Brushed Steel	Canterbury 0.6L - Black
Canterbury Compact Tray - Light Wood	●	●	●	●
Canterbury Compact Tray - Dark Wood	●	●	●	●
Canterbury Compact Tray - Black	●	●	●	●
Canterbury Classic Tray - Black	●	●	●	●
Canterbury Drawer Tray - Black	●	●	●	●
Windermere Tray - Black	●	●	●	●
Beckett Tray - Black	●	●	●	●
Buckingham Compact Tray - Light Wood	x	x	x	x
Buckingham Compact Tray - Dark Wood	x	x	x	x
Buckingham Compact Tray - Black	x	x	x	x
Buckingham Standard Tray - Light Wood	x	x	x	x
Buckingham Standard Tray - Dark Wood	x	x	x	x
Buckingham Standard Tray - Black	x	x	x	x
Lancaster Tray - Black	x	x	x	x
Aintree Tray - Black	●	●	●	●
Kensington Drawer Tray - Black	x	x	x	x
Richmond Butler Tray - Black	●	●	●	●
Epsom Hospitality Tray - Black	●	●	●	●

COMBINATIONS

Canterbury 1L - Brushed Steel	Canterbury 1L - Black	Kensington 0.6L - Brushed Steel	Buckingham 1L - Polished Steel	Lancaster 1L - Black	Lancaster 1L - White
●	●	x	x	x	x
●	●	x	x	x	x
●	●	x	x	x	x
●	●	x	x	x	x
●	●	x	x	x	x
●	●	●	x	x	x
●	●	●	x	x	x
x	x	x	●	x	x
x	x	x	●	x	x
x	x	x	●	x	x
x	x	x	●	x	x
x	x	x	x	●	●
●	●	●	x	x	x
x	x	●	x	x	x
●	●	●	●	●	●
●	●	●	●	●	●

CORBY KETTLES

Engineered with world leading thermal control technology, our kettles are available in a range of colours and sizes with matching welcome trays available.

CANTERBURY 0.6L DOUBLE WALLED KETTLE



- Features:**
- Silicone insulation sleeve
 - Push button lid
 - 360° base
 - Concealed heating element
 - Integrated filter
 - Easy to clean
 - Strix thermal controller

Specification:
 Brushed Steel / Black
 0.9kg
 1000W
 0.8m cable length

Dimensions:
 Height - 158mm
 Width - 122mm
 Depth - 206mm

LANCASTER 1L KETTLE



- Features:**
- 360° base
 - Concealed heating element
 - Integrated water level window
 - Removable filter
 - Strix thermal controller
 - Matt & gloss finish

Specification:
 White / Black
 0.7kg
 1200W - 1500W
 0.7m cable length

Dimensions:
 Height - 190mm
 Width - 180mm
 Depth - 143mm

CANTERBURY 0.6L KETTLE



- Features:**
- Push button lid
 - 360° base
 - Concealed heating element
 - Integrated filter
 - Easy to clean
 - Strix thermal controller

Specification:
 Brushed Steel / Black
 0.8kg
 1000W
 0.8m cable length

Dimensions:
 Height - 158mm
 Width - 118mm
 Depth - 206mm

KENSINGTON 0.6L KETTLE



- Features:**
- Push button lid
 - 360° base
 - Removable filter
 - Strix thermal controller

Specification:
 Brushed Steel and Black
 0.7kg
 1000W
 0.7m cable length

Dimensions:
 Height - 195mm
 Width - 175mm
 Depth - 120mm

CANTERBURY 1L KETTLE



- Features:**
- Push button lid
 - 360° base
 - Concealed heating element
 - Integrated filter
 - Easy to clean
 - Strix thermal controller

Specification:
 Brushed Steel / Black
 0.82kg
 1500W
 0.8m cable length

Dimensions:
 Height - 188mm
 Width - 118mm
 Depth - 206mm

BUCKINGHAM 1L KETTLE



- Features:**
- 360° base
 - Concealed heating element
 - Removable filter
 - Integrated water level window
 - Strix thermal controller

Specification:
 Polished Steel and Black
 0.8kg
 1250W - 1500W
 0.7m cable length

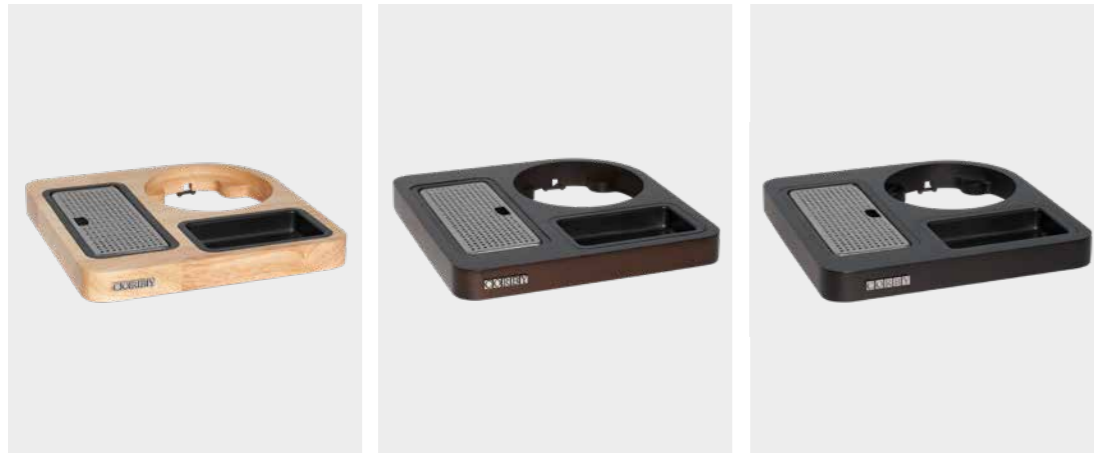
Dimensions:
 Height - 210mm
 Width - 205mm
 Depth - 158mm



CORBY WELCOME TRAYS

Our range of Corby welcome trays feature our signature drip tray that was designed to eliminate the need for saucers, saving time and money in cleaning.

CANTERBURY COMPACT WELCOME TRAYS



Features:

- Accommodates all Corby Canterbury kettles
- Built in sachet holder
- Integrated drip tray
- Anti-theft
- Space saving design
- Rubber feet

Specification:

Light Wood/ Dark Wood / Black
0.6kg

Dimensions:

Height - 30mm
Width - 230mm
Depth - 226mm

BUCKINGHAM COMPACT WELCOME TRAYS



Features:

- Accommodates a Corby Buckingham kettles
- Built in sachet holder
- Integrated drip tray
- Solid wood
- Anti-theft

Specification:

Light Wood / Dark Wood / Black
1.2kg

Dimensions:

Height - 30mm
Width - 335mm
Depth - 180mm

CANTERBURY CLASSIC WELCOME TRAY



CANTERBURY DRAWER WELCOME TRAY



Features:

- Accommodates all Corby Canterbury kettles
- Built in drawer sachet holder
- Integrated drip tray
- Integrated spoon tray
- Anti-theft
- Easy to clean

Specification:

Black
0.35kg

Dimensions:

Height - 35mm
Width - 410mm
Depth - 180mm



Features:

- Accommodates all Corby Canterbury kettles
- Built in drawer sachet holder
- Integrated drip tray
- Integrated spoon tray
- Anti-theft
- Easy to clean

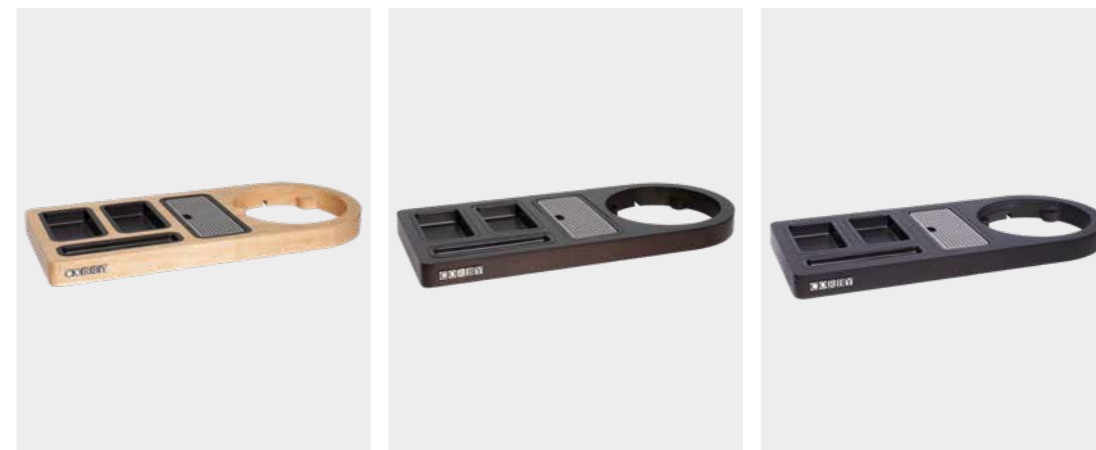
Specification:

Black
0.75kg

Dimensions:

Height - 62mm
Width - 250mm
Depth - 210mm

BUCKINGHAM STANDARD WELCOME TRAYS



Features:

- Accommodates a Corby Buckingham kettles
- Built in sachet holder
- Integrated drip tray
- Solid wood
- Anti-theft

Specification:

Light Wood / Dark Wood / Black
1.4kg

Dimensions:

Height - 35mm
Width - 460mm
Depth - 200mm

BECKETT WELCOME TRAY



WINDERMERE WELCOME TRAY



Features:

- Accommodates all Corby Canterbury & Kensington kettles
- Built in sachet holder
- Integrated drip tray
- Anti-theft
- Easy to clean

Specification:

Black
0.6kg

Dimensions:

Height - 31mm
Width - 140mm
Depth - 450mm



Features:

- Accommodates all Corby Canterbury & Kensington kettles
- Built in sachet holder
- Integrated drip tray
- Anti-theft
- Easy to clean

Specification:

Black
0.6kg

Dimensions:

Height - 31mm
Width - 320mm / 270mm
Depth - 100mm

LANCASTER WELCOME TRAY



AINTREE WELCOME TRAY



Features:

- Accommodates all Corby Lancaster kettles
- Space saving design
- Integrated drip tray
- Anti-theft

Specification:

Black
0.75kg

Dimensions:

Height - 31mm
Width - 355mm
Depth - 200mm



Features:

- Accommodates the Corby Kensington kettles
- Space saving design
- Integrated drip tray
- Anti-theft

Specification:

Black
0.7kg

Dimensions:

Height - 31mm
Width - 230mm
Depth - 230mm

KENSINGTON DRAWER WELCOME TRAY



Features:

- Accommodates the Kensington kettle
- Built in drawer sachet holder
- Integrated drip tray
- Anti-theft
- Easy to clean

Specification:

Black
1.3kg

Dimensions:

Height - 62mm
Width - 245mm
Depth - 200mm

CORBY HOSPITALITY TRAYS

Corby of Windsor supplies a wide variety of hospitality trays and sachet holders to fit perfectly within the hotel guest room. The collection includes a range of welcome trays, from traditional butler trays to modern slimline hospitality trays.

RICHMOND COMPACT BUTLER TRAY



Features:

- Accommodates all Corby kettles, sachet holders and mug trays
- Solid wood construction
- Integrated handles
- Raised sides

Specification:

Black
0.85kg

Dimensions:

Height - 40mm
Width - 420mm
Depth - 320mm

EPSOM HOSPITALITY TRAY



Features:

- Accommodates all Corby kettles
- Durable gloss melamine
- Hard wearing & heat resistant up to 140°C
- Easy to clean
- Raised sides

Specification:

Black
0.8kg

Dimensions:

Height - 26mm
Width - 398mm
Depth - 300mm

ASCOT MUG TRAY



Features:

- Durable melamine
- Hard wearing & heat resistant up to 140°C
- Integrated handles
- Raised sides

Specification:

Black
0.2kg

Dimensions:

Height - 20mm
Width - 318mm
Depth - 128mm

CORBY SACHET HOLDERS

Designed specifically for the hotel guest room experience, Corby of Windsor offer sachet holders in an array of sizes, providing choice for hoteliers.

THAME SACHET HOLDER



Features:

- Durable melamine
- 3 storage compartments
- Easy to clean
- Hard wearing & heat resistant up to 140°C

Specification:

Black
0.15kg

Dimensions:

Height - 45mm
Width - 150mm
Depth - 100mm

KENSINGTON SACHET HOLDER



Features:

- Durable nylon
- 4 storage compartments
- Easy to clean
- Hard wearing & heat resistant up to 140°C

Specification:

Black
0.25kg

Dimensions:

Height - 38mm
Width - 211mm
Depth - 168mm

ASCOT SACHET HOLDER



Features:

- Durable melamine
- 3 storage compartments
- Easy to clean
- Hard wearing & heat resistant up to 140°C

Specification:

Black
0.1kg

Dimensions:

Height - 40mm
Width - 95mm
Depth - 125mm

MIDDLETON SACHET HOLDER



Features:

- ABS
- 4 storage compartments
- Rubber feet
- Easy to clean

Specification:

Black
0.1kg

Dimensions:

Height - 55mm
Width - 125mm
Depth - 75mm

KINGSTON SACHET HOLDER



Features:

- Durable melamine
- Large storage compartment
- Easy to clean
- Hard wearing & heat resistant up to 140°C

Specification:

Black
0.28kg

Dimensions:

Height - 55mm
Width - 200mm
Depth - 75mm



CORBY HAIR DRYER

Designed for guest safety, our range of stylish & functional hair dryers are available in a variety of colours, styles and specifications. Why not combine them with one of our storage solutions? Designed for different applications, our holders and bags protect the hairdryer.

ICONIC & IONIC

As a 90 year old brand, it's important to keep up with ever changing trends & technology. Ionic technology provides a more effective way to dry all hair types. The negative ionic charge helps retain moisture, resulting in smoother, healthier looking hair with less frizz.



Ionic Technology

Ionic technology provides a more effective way to dry all hair types.



YOU'RE IN CONTROL

With up to 2000W of hand-held power & heat, it's important that hair dryers are used correctly. Unfortunately, not all guests feel the same way, which is why Corby offer **Trigger Activated** solutions for hoteliers who would like that little extra piece of mind.



British Designed



Our specialised range of hotel electricals & accessories is ever-evolving alongside styles & trends we see around the world. This is why we are confident we can accommodate any guest room environment.



Trigger Activated

Specially designed for hotels, the Stratus hair dryer works on trigger activation for guest safety. The trigger activation button is easy to use and friendlier to the environment.

SLEEK STORAGE

Corby of Windsor offer a range of storage solutions that can be used for the various portable hair dryers. Most Corby hair dryers feature a specially coiled cable, which makes it much easier to store than conventional hair dryers. For example the Stratus Drawer Mounted Holder is designed to uniquely store the product so it is presented like it has never been used before.



Coiled Cable

Corby coiled cable hair dryers can extend from 0.8m to 2.1m in length. This makes them easy to store when compared to conventional hair dryers.



Bromley Hair Dryer Ring

Shown with Dalton 1600W hair dryer.



Kendall Wall Mounted Hair Dryer

Wall mounted hair dryers offer additional security.



Bromley Hair Dryer Bag

Shown with the Bedford folding hair dryer. The bromley hair dryer bag is made from a soft yet durable material to protect the hairdryer when not in use.



CORBY HAIR DRYERS

Corby of Windsor offer a variety of hair dryers with a range of different power, speed and temperature settings. The Corby hair dryer collection has been designed and engineered to accommodate both the hotelier and their guests.

BEDFORD 2000W HAIR DRYER



Features:

- Folding design
- 2 speed /3 temperature settings
- Cool blow feature
- Coiled cable
- Removable filter

Specification:

Black and Chrome
2000W
0.6kg
0.8 - 2.1m cable length

Dimensions:

Height - 280mm (130mm folded)
Width - 260mm
Depth - 90mm

STRATUS 1800W HAIR DRYER



Features:

- Ionic technology
- Trigger activated
- 2 speed /3 temperature settings
- Removable filter
- Coiled cable

Specification:

Black
1800W
0.5kg
0.8 - 2.1m cable length

Dimensions:

Height - 240mm
Width - 178mm
Depth - 73mm

LINTON 1200W HAIR DRYER / WALL / DRAWER MOUNTED



Features:

- Trigger activated
- Wall mounted
- 2 speed /2 temperature settings
- Coiled cable
- Integrated filter

Specification:

White & Chrome
1200W
0.75kg

Dimensions:

Height - 180mm
Width - 200mm
Depth - 95mm

CORBY HAIR DRYER ACCESSORIES COLLECTION

Designed specifically by Corby, our range of accessories are designed to store hairdryers in different ways to suit a variety of hotel guest rooms.

CHESTER 1800W HAIR DRYER



Features:

- Ergonomic handle design
- 2 speed /3 temperature settings
- Cool blow feature
- Coiled cable
- Removable filter

Specification:

Black and Chrome
1800W
0.6kg
0.8 - 2.1m cable length

Dimensions:

Height - 260mm
Width - 265mm
Depth - 85mm

DALTON 1600W HAIR DRYER



Features:

- Trigger activated
- Ergonomic handle design
- 2 speed /3 temperature settings
- Coiled cable
- Integrated filter

Specification:

Black and Chrome
1600W
0.5kg
0.8 - 1.8m cable length

Dimensions:

Height - 260mm
Width - 155mm
Depth - 80mm

CLUTCH HAIR DRYER HOLDER



Features:

- Suitable for the Stratus, Bedford, Chester & Dalton hair dryers
- Wall mounted
- Concealed fixings
- Rigid & durable construction

Specification:

Black
0.2kg

Dimensions:

Height - 105mm
Width - 120mm
Depth - 100mm

BROMLEY RING HAIR DRYER HOLDER



Features:

- Suitable for the Bedford, Chester & Dalton hair dryers
- Wall mounted
- Concealed fixings
- Rigid & durable construction

Specification:

Black
0.1kg

Dimensions:

Height - 65mm
Width - 100mm
Depth - 90mm

KENDAL 1600W HAIR DRYER / WALL MOUNTED



Features:

- Trigger activated
- Wall mounted
- 2 speed /3 temperature settings
- Coiled cable
- Integrated filter

Specification:

White and Chrome
1600W
1.4kg
Shaver socket: 0.05/230v & 0.1/115v

Dimensions:

Height - 260mm
Width - 260mm
Depth - 135mm

LINTON 1200W HAIR DRYER



Features:

- Trigger activated
- Ergonomic handle design
- 2 speed /2 temperature settings
- Integrated filter
- Overheat protection

Specification:

White
1200W
0.4kg
1.7m cable length

Dimensions:

Height - 219mm
Width - 132mm
Depth - 80mm

BROMLEY HAIR DRYER BAG



Features:

- 100% Terylene (polyester)
- Protective soft fabric
- Discreet storage solution
- Drawstring opening
- International hair dryer symbol

Specification:

Black
0.06kg

Dimensions:

Height - 400mm
Width - 300mm
Depth - 4mm

STRATUS HAIR DRYER HOLDER / DRAWER MOUNTED



Features:

- Accommodates the Stratus hair dryer
- Suitable for drawer mounting
- Cable tidy
- 2 fixing locations
- Easy to clean

Specification:

Black
0.4kg

Dimensions:

Height - 325mm
Width - 325mm
Depth - 45mm



CORBY MINIBARS

The Eton E is the World's highest rated glass door minibar on the market.* Its innovative shelf design & use of space allow for its Silent Peltier Technology to cool it effectively, perfect for a night's stay. If your guests require a larger minibar, we offer 20L, 35L & 40L options with glass or solid lockable doors, that are sure to accommodate guest room furniture. *Checked on 20/06/23

TAKE IT EASY

As a supplier of some of the world's finest hotels, Corby of Windsor understand that relaxation and functionality are key to any high-end hotel stay. The Minibar Collection was specifically designed to include silent technology and fit a variety of spaces, ensuring your guests receive a good night's rest every time.



Peltier Silent Technology

Corby Minibars were designed to incorporate state of the art Peltier Silent Technology to ensure that guests have a restful stay.



THE ART OF FLEXIBILITY

Corby minibars are designed to be adaptable to open from either the left or right side, making them suitable for most guest room layouts.

Adjustable Cooling Technology

Corby minibars have an adjustable dial on the rear, allowing hoteliers to set the desired temperature of the contents.



Lockable Eton Door Minibar

All the solid door Eton Minibars are lockable for additional security & peace of mind for all guests.



Flexible Design

Eton solid door minibars can be fully integrated within furniture by fitting a 'minibar slider kit'. This creates a seamless look for minimalist styled interiors.

EMBRACING ELEGANCE

Embrace the best of guest room hospitality with the modern elegance of the Corby of Windsor minibar collection. Our minibars have a modern & clean aesthetic which creates a high quality hospitality experience to suit a variety of guest room spaces.



Low E Glass

Low - emissivity glass has a special coating designed to reflect heat back into the room, making Eton Minibars extra cold.



CORBY MINIBARS

The Corby of Windsor Minibar Collection offers a range of sizes and styles that are perfect for the hotel guest room. Each minibar is tested for functionality, quality and designed with precision to fit beautifully into a variety of hotel guest rooms.

45L HENLEY MINIBAR \ Solid Door



Features:

- Drawer open minibar
- Adjustable shelving systems
- Silent operation
- Interior LED light

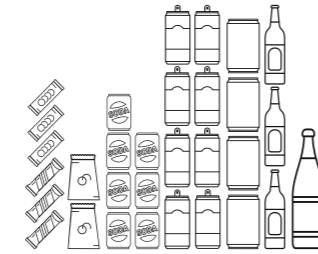
Specification:

Black and white
45L
13.6kg
58W
R600a Refrigerant
Insulation - Cyclopentane

Dimensions:

Height - 425mm
Width - 490mm
Depth - 460mm

Capacity Guide:



- 3 x Chocolate Bars
- 3 x Breakfast Bars
- 2 x 200g Chocolate Treat Bags
- 7 x Mini Cans
- 8 x 250ml Tall Cans
- 4 x 330ml Cans
- 3 x 330ml Bottles
- 1 x 1L Water Bottle or 1x 750ml Wine

40L RADLEY MINIBAR \ Solid Door



Features:

- Retro design
- Left or right opening
- Silent operation
- Interior LED light

Specification:

Black and white
40L
12.3kg
58W
R600a Refrigerant
Insulation - Cyclopentane

Dimensions:

Height - 560mm
Width - 400mm
Depth - 425mm

Capacity Guide:



- 3 x Chocolate Bars
- 2 x Breakfast Bars
- 2 x 200g Chocolate Treat Bags
- 4 x Mini Cans
- 6 x 250ml Tall Cans
- 4 x 330ml Cans
- 7 x 330ml Bottles

40L MINIBAR \ Solid Door



Features:

- Lockable door (2 keys supplied)
- Left or right opening
- Silent operation
- Interior LED light

Specification:

Black and white
40L
11.4kg
58W
R600a Refrigerant
Insulation - Cyclopentane

Dimensions:

Height - 560mm
Width - 400mm
Depth - 425mm

Capacity Guide:



- 3 x Chocolate Bars
- 2 x Breakfast Bars
- 2 x 200g Chocolate Treat Bags
- 4 x Mini Cans
- 6 x 250ml Tall Cans
- 4 x 330ml Cans
- 7 x 330ml Bottles

40L MINIBAR \ Glass Door



Features:

- Adjustable shelving systems
- Low E glass
- Silent operation
- Interior LED light
- Left or right opening

Specification:

Black and white
40L
15.8kg
58W
R600a Refrigerant
Insulation - Cyclopentane

Dimensions:

Height - 570mm
Width - 400mm

Capacity Guide:



- 3 x Chocolate Bars
- 2 x Breakfast Bars
- 2 x 200g Chocolate Treat Bags
- 9 x Mini Cans
- 6 x 250ml Tall Cans
- 4 x 330ml Cans
- 3 x 330ml Bottles
- 1 x 1L Water Bottle
- 1 x 750ml Wine Bottle

40L RADLEY MINIBAR \ Solid Door



Features:

- Retro design
- Left or right opening
- Silent operation
- Interior LED light

Specification:

Cream and white
40L
12.3kg
58W
R600a Refrigerant
Insulation - Cyclopentane

Dimensions:

Height - 560mm
Width - 400mm
Depth - 425mm

Capacity Guide:



- 3 x Chocolate Bars
- 2 x Breakfast Bars
- 2 x 200g Chocolate Treat Bags
- 4 x Mini Cans
- 6 x 250ml Tall Cans
- 4 x 330ml Cans
- 7 x 330ml Bottles

35L MINIBAR \ Solid Door



Features:

- Lockable door (2 keys supplied)
- Left or right opening
- Silent operation
- Interior LED light

Specification:

Black and white
35L
10.1kg
R600a Refrigerant
Insulation - Cyclopentane

Dimensions:

Height - 475mm
Width - 385mm
Depth - 455mm

Capacity Guide:



- 3 x Chocolate Bars
- 2 x Breakfast Bars
- 6 x Mini Cans
- 6 x 250ml Tall Cans
- 3 x 330ml Bottles
- 1 x 1L Water Bottle
- 1 x 750ml Wine Bottle

35L MINIBAR \ Glass Door



Features:

- Adjustable shelving systems
- Low E glass
- Silent operation
- Left or right opening

Specification:

Black and white
35L
12.9kg
58W
R600a Refrigerant
Insulation - Cyclopentane

Dimensions:

Height - 485mm
Width - 385mm
Depth - 450mm

Capacity Guide:



- 3 x Chocolate Bars
- 2 x Breakfast Bars
- 6 x Mini Cans
- 6 x 250ml Tall Cans
- 3 x 330ml Bottles
- 1 x 1L Water Bottle
- 1 x 750ml Wine Bottle

ETON E MINIBAR \ Glass Door



Features:

- B energy rating
- Low E glass
- Silent operation
- Left or right opening

Specification:

Black
10L
10.3kg
58W
R600a Refrigerant
Insulation - Cyclopentane

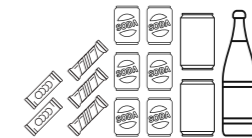
Dimensions:

Height - 440mm
Width - 360mm
Depth - 280mm

Energy Rating:



Capacity Guide:



- 3 x Chocolate Bars
- 2 x Breakfast Bars
- 6 x Mini Cans
- 2 x 330ml Cans
- 1 x 1L Water Bottle

20L MINIBAR \ Solid Door



Features:

- Lockable door (2 keys supplied)
- Left or right opening
- Silent operation
- Interior LED light

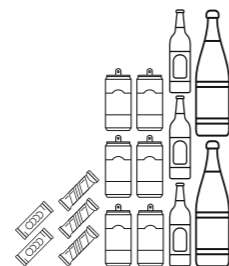
Specification:

Black and white
20L
8.6kg
58W
R600a Refrigerant
Insulation - Cyclopentane

Dimensions:

Height - 430mm
Width - 360mm
Depth - 390mm

Capacity Guide:



- 3 x Chocolate Bars
- 2 x Breakfast Bars
- 6 x 250ml Tall Cans
- 3 x 330ml Bottles
- 2 x 1L Water Bottle

MINIBAR SLIDER KIT



Features:

- Enables minibar integration into guestroom cabinets
- Suitable for all Eton solid door minibars

Specification:

Black
0.32kg

Dimensions:

Height - 45mm
Width - 247mm
Depth - 9mm

20L MINIBAR \ Glass Door



Features:

- Adjustable shelving systems
- Low E glass
- Silent operation
- Left or right opening

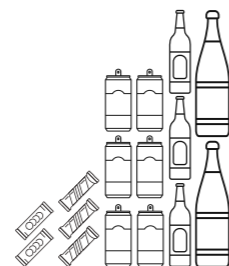
Specification:

Black and white
20L
11.7kg
58W
R600a Refrigerant
Insulation - Cyclopentane

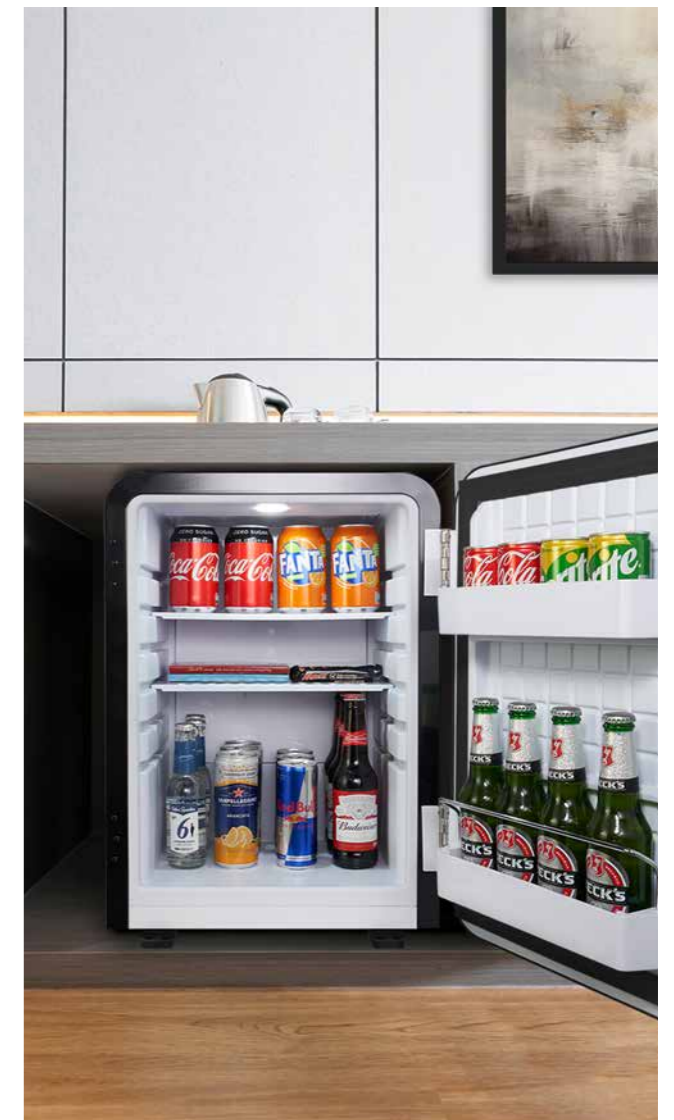
Dimensions:

Height - 440mm
Width - 360mm
Depth - 385mm

Capacity Guide:



- 3 x Chocolate Bars
- 2 x Breakfast Bars
- 6 x 250ml Tall Cans
- 3 x 330ml Bottles
- 2 x 1L Water Bottle





SAFE & SOUND

As a supplier to some of the world's finest hotels, Corby of Windsor understands that relaxation and peace of mind are integral to any hotel stay. Our Corby Safes are specifically designed to fit a variety of spaces and are constructed with heavy duty steel doors.



CORBY SAFES

Safe & robust, our range of safes are designed to be secure & easy to use around the World. We offer different levels of security to make hotels & hotel guests feel at ease that their belongings are safe. Our CEU device allows hoteliers to set passcodes, change lighting and digitally record up to 125 passcodes, in the unlikely event of theft.



Touch Tone

All Corby safes are digitally controlled with touch tone display panels, making it very convenient for hotel guests to store their valuables.

PEACE OF MIND

The Corby Safes Collection is designed & engineered to be secure & easy to use around the world. We offer different levels of security to make hoteliers & hotel guests feel at ease that their belongings are safe. All safes are fitted with 18mm electronically motorised locking bolts.



Automatic Locking System

Each safe is fitted with heavy duty motorised locking bolts that can only be opened with a pass code or a unique over-ride key (supplied).

CEU (Computer Emergency Unit)

Our CEU device allows hoteliers to set passcodes, change lighting & digitally record up to 125 pass codes, in the unlikely event of theft.

CORBY SAFES & CEU

The Corby of Windsor Safes Collection offers a range of sizes and styles that are perfect for the hotel guest room. Each safe is tested for functionality and quality, designed with precision to fit beautifully into a variety of hotel guest rooms.

WESTMINSTER DIGITAL LAPTOP SAFE



WHITEHALL DIGITAL COMPACT SAFE



Features:

- Suitable for laptops up to 15"
- Digital braille control panel
- Supplied with key & batteries
- Spring assisted door
- Compatible with CEU

Specification:

Black
13kg
4 x AA Batteries
4mm steel door
1.5mm steel body

Dimensions:

Height - 195mm
Width - 430mm
Depth - 370mm



Features:

- Suitable for laptops up to 14"
- Supplied with key & batteries
- Spring assisted door

Specification:

Black
9kg
4 x AA Batteries
4mm steel door
1.5mm steel body

Dimensions:

Height - 190mm
Width - 420mm
Depth - 300mm

MAYFAIR DIGITAL OPEN TOP SAFE



CEU / Computer Emergency Unit



Features:

- Suitable for laptops up to 15"
- Digital braille control panel
- Supplied with key & batteries
- Spring assisted door
- Compatible with CEU

Specification:

Black
10kg
4 x AA Batteries
3mm steel door
1.5mm steel body

Dimensions:

Height - 130mm
Width - 400mm
Depth - 350mm



Features:

- Holds 125 passcodes
- Cable for CEU to computer included in pack
- Supplied with batteries
- Compatible with the Westminster & Mayfair Safes

Specification:

Black
0.3kg
4 x AAA Batteries

Dimensions:

Height - 28mm
Width - 180mm
Depth - 78mm





MIX & MATCH

Our solid wood range include welcome trays, clothes hangers and luggage racks. These have been colour matched so you can be assured the colour & finish is consistent throughout the room.



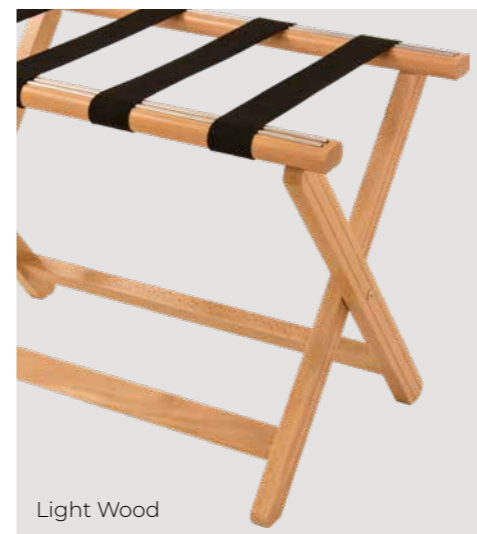
Guest Hangers

Solid wood hangers are available in hooked or security pin options in three different colours.

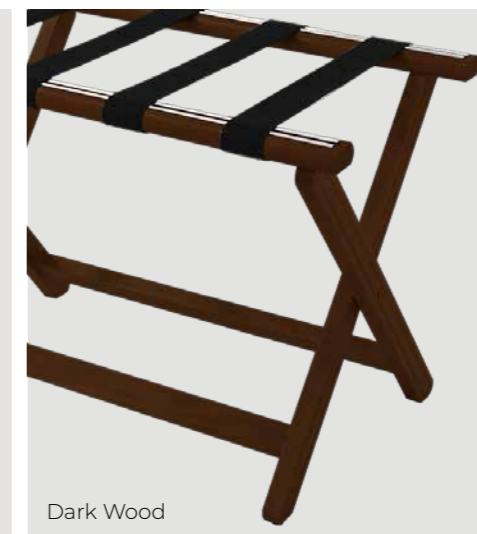


Luggage Racks

Constructed from solid wood, our collection of luggage racks have been tested to hold weight up to 50kg. The chrome inlays and durable nylon straps provide protection and enable them to be stored away.



Light Wood



Dark Wood



Black

CORBY GUEST ROOM COLLECTION

Our complimentary range has been specially selected to complete the room. These include touch screen LED mirrors, double layer bins, solid wood luggage racks and many more guestroom products.



Bedroom Bin Recycling

Designed to be used with our single or double layer bins, the new recycling bin inserts have been cleverly designed to be used independantly or as a pair. The unique handle displays internationally recognised icons for 'general waste' and 'recycling' making it easy to understand in any guest room around the world. The handle has also been designed with 2 slots that allow a bin bag to be manoeuvred around the handle so the icon isn't covered.

CLEAN & SIMPLE

New to the range, the Sana toilet brush is a simple yet stylish design that features a hygienic silicone brush head. Its slimline design allows it to be wall mounted, making cleaning the bathroom floor that little bit easier.



Sana Toilet Brush

The flexible silicone head has been designed to get to those hard to reach areas. The tiny bristles have been developed to be anti-drip and anti-clog, making cleaning the toilet less unpleasant.

CORBY GUESTROOM BINS

Our range of bins have been specifically selected with the hotel guest in mind. Pedal bins are the ideal choice for bathrooms, whereas our range of bedroom bins can be used with uniquely designed recycling inserts.

THORNTON 9L DOUBLE LAYER BIN



Features:

- Dual layer bin
- Steel collar
- Flame retardant
- Durable construction
- Rubber base

Specification:
Brushed Steel / Black
1.3kg

Dimensions:
Height - 260mm
Width - 223mm
Depth - 223mm

NEWPORT DUAL RECYCLING BIN



Features:

- International recycling icons
- Removable collar and inserts
- Concealed bag feature
- Durable construction

Specification:
Brushed steel, green & dark grey
3kg
6L +6L

Dimensions:
Height - 365mm
Width - 192mm
Depth - 272mm

THORNTON 9L SINGLE LAYER BIN



Features:

- Single layer bin
- Durable construction
- Rubber base

Specification:
Brushed Steel / Black / White
0.7kg

Dimensions:
Height - 260mm
Width - 223mm
Depth - 223mm

THORNTON RECYCLE BIN INSERT



Features:

- Printed sorting guide
- Suitable for Corby single or double layer bins
- Designed to be used with or without bags
- Easy to clean

Specification:
Black/ Green
0.3kg

Dimensions:
Height - 250mm
Width - 205mm
Depth - 120mm

CROFT 3L PEDAL BIN



Features:

- Compact size
- Inner layer bin
- Gripped foot pedal
- Easy to clean
- Soft close

Specification:
Polished Steel / Black / White
0.63kg

Dimensions:
Height - 280mm
Width - 205mm
Depth - 255mm

CORBY GUESTROOM HANGERS

Our Corby Chelsea and Burlington solid wood guest hangers are available in three colours and two styles.

CHELSEA GUEST HANGER



Features:

- Solid wood
- Standard hook
- Garment hooks
- Trouser bar

Specification:
Light wood / Dark Wood / Black
0.1kg

Dimensions:
Height - 215mm
Width - 445mm
Depth - 12mm

BURLINGTON GUEST HANGER WITH CLIPS AND SECURITY PIN



Features:

- Solid wood
- Security pin
- Garment clips
- Garment hooks

Specification:
Light Wood / Dark Wood / Black
0.14kg

Dimensions:
Height - 265mm
Width - 445mm
Depth - 27mm

BURLINGTON GUEST HANGER WITH CLIPS



Features:

- Solid wood
- Standard hook
- Garment clips
- Garment hooks

Specification:
Light Wood / Dark Wood / Black
0.14kg

Dimensions:
Height - 265mm
Width - 445mm
Depth - 27mm

CHELSEA HANGER SECURITY PIN RING



Features:

- Compatible with Corby security pin guest hangers
- Durable material

Specification:
Silver metal
0.01kg

Dimensions:
Height - 65mm
Width - 50mm
Depth - 10mm

CHELSEA GUEST HANGER WITH SECURITY PIN



Features:

- Solid wood
- Security pin
- Trouser bar
- Garment hooks

Specification:
Light Wood / Dark Wood / Black
0.1kg

Dimensions:
Height - 215mm
Width - 445mm
Depth - 12mm



CORBY LUGGAGE RACKS

Constructed from solid wood, our collection of luggage racks have been tested to hold weight up to 50kg. The chrome inlays and durable nylon straps provide protection and enable them to be stored away.

YORK LUGGAGE RACK



Features:

- Durable nylon straps
- Chrome inlays
- Solid wood construction
- Foldable & easy to store
- Holds up to 50kg

Specification:

Light Wood / Dark Wood / Black
3.3kg

Dimensions: (Folded)

Height - 485mm	Height - 600mm
Width - 655mm	Width - 655mm
Depth - 385mm	Depth - 150mm

CORBY GUESTROOM ITEMS

As part of our extended range, you will find other quality hotel products available including our new Sana silicone toilet brush and Bremmer tower fan.

WINCHESTER LED MIRROR / FREE STANDING



WINCHESTER MIRROR / FREE STANDING



Features:

- LED illuminated
- Double sided mirror
- Auto cut-off
- Touch screen button
- Extendable arm
- 1x & 5x magnification
- Supplied with batteries

Specification:

Chrome
4 x AAA batteries
1.1kg

Dimensions:

Height - 340 - 420mm
Width - 230mm
Depth - 150mm



Features:

- Double sided mirror
- Durable chrome finish
- 360 rotation & tilt feature
- 1x & 5x magnification
- Extendable arm

Specification:

Chrome
0.95kg

Dimensions:

Height - 340 - 420mm
Width - 230mm
Depth - 150mm

ASHTON LUGGAGE RACK WITH BACK



Features:

- Tubular steel construction
- Durable finish
- Durable nylon straps
- Foldable & easy to store
- Holds up to 50kg

Specification:

Chrome and Black
2.5kg

Dimensions: (Folded)

Height - 710mm	Height - 865mm
Width - 620mm	Width - 620mm
Depth - 420mm	Depth - 75mm

ASHTON LUGGAGE RACK WITHOUT BACK



Features:

- Tubular steel construction
- Durable finish
- Durable nylon straps
- Foldable & easy to store
- Holds up to 50kg

Specification:

Chrome and Black
1.9kg

Dimensions: (Folded)

Height - 480mm	Height - 630mm
Width - 620mm	Width - 620mm
Depth - 440mm	Depth - 55mm

WINCHESTER MIRROR / WALL MOUNTED



Features:

- Double arm mirror design
- Double sided mirror
- Durable nylon hinge
- 1x & 5x magnification
- 360 rotation & tilt feature

Specification:

Chrome / Black Chrome
0.8kg

Dimensions:

Height - 320mm
Width - 255 - 435mm
Depth - 125mm

WINCHESTER LED MIRROR / WALL MOUNTED



Features:

- LED illuminated
- Double sided mirror
- Auto cut-off
- Touch screen button
- Durable nylon hinge
- 1x & 5x magnification
- 360 rotation & tilt feature

Specification:

Chrome / Black Chrome
4 x AAA batteries
0.95kg

Dimensions:

Height - 320mm
Width - 255 - 435mm
Depth - 125mm

DEVON CUBE TISSUE BOX HOLDER



Features:

- ABS constructed
- Detachable base
- Easy to clean

Specification:

Chrome / Black
0.3kg

Dimensions:

Height - 130mm
Width - 135mm
Depth - 135mm

SANA TOILET BRUSH



Features:

- Hygienic silicone bristles
- Anti drip brush head
- Flexible brush head
- Freestanding or wall mountable
- Slimline design

Specification:

Chrome & Black / Black
0.3kg

Dimensions:

Height - 390mm
Width - 115mm
Depth - 70mm

DEVON RECTANGULAR TISSUE BOX HOLDER



Features:

- ABS constructed
- Detachable base
- Wall or surface mounted

Specification:

Chrome / Black
0.35kg

Dimensions:

Height - 60mm
Width - 255mm
Depth - 140mm

DOVER BATH MAT



Features:

- Easy to clean
- Textured rubber
- Anti slip suction pads

Specification:

White
0.77kg

Dimensions:

Height - 740mm
Width - 345mm
Depth - 10mm

BRIGHTON LED TORCH



Features:

- Solid aluminium construction
- Battery powered
- Ergonomic design
- Anti-theft
- LED torch light
- Wall mountable

Specification:

Black & Chrome
3 x AA batteries
0.5kg

Dimensions:

Height - 59mm
Width - 192mm
Depth - 60mm

HELMSLEY DIGITAL BATHROOM SCALES



Features:

- LCD digital display
- Tempered glass
- Slimline design
- Anti-slip rubber feet
- Imperial & metric weight settings

Specification:

Grey / Black
1.5kg
2 x AAA batteries
6mm glass

Dimensions:

Height - 302mm
Width - 302mm
Depth - 22mm

BREMMER TOWER FAN



Features:

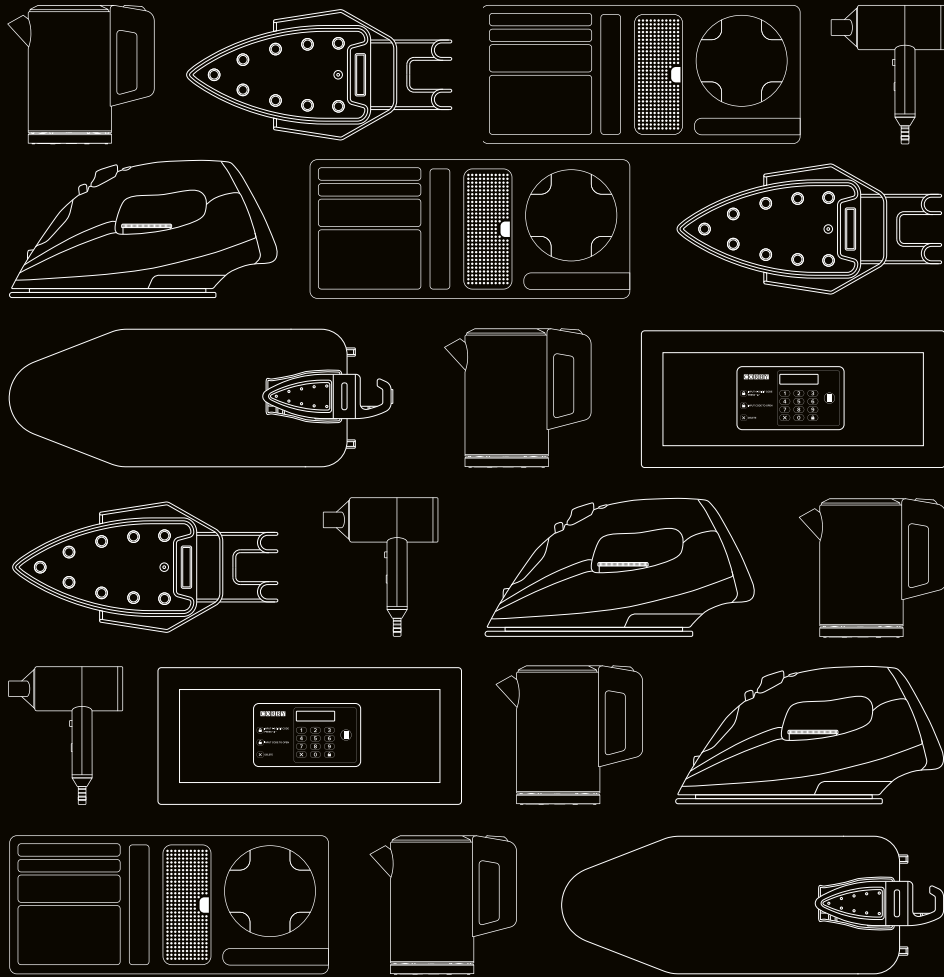
- 70° rotation
- Manual controls
- Compact design
- 3 speed settings
- Floor standing
- 29"

Specification:

Black
50W
2.6kg

Dimensions:

Height - 740mm
Width - 260mm
Depth - 260mm



DESIGNED FOR HOTELS

CORBY
OF WINDSOR

WWW.CORBYOFWINDSOR.COM